

# BELLEMARE

**HEAVY HAUL & RIGGING**  
ENGINEERED TRANSPORTATION, SLIDING AND LIFTING



[groupebellemare.com](http://groupebellemare.com)



# GROUPE BELLEMARE

Groupe Bellemare is a **3<sup>rd</sup> generation family business** that has been serving clients **since 1959**.

Today, the company has more than 500 employees and provides them with an innovative work environment facilitating work-family balance and a healthy and safe quality of life.

With over a half century of experience and its sustained R&D efforts, the Company offers high-quality products and services in areas as diverse as concrete, abrasives and minerals, dimensional load transportation, and recycling.

Groupe Bellemare makes a positive contribution to the quality of life of citizens in the communities it serves by supporting numerous social causes and promoting local purchasing through its responsible procurement practices.

## OUR BUSINESS SECTORS

- ☑ Abrasives & Speciality Minerals
- ☑ Concrete
- ☑ Concrete Blocks
- ☑ Stone Slingers
- ☑ Container Rental
- ☑ Demolition
- ☑ Heavy Haul & Rigging
- ☑ RCC Paving
- ☑ Recycling & Landfill
- ☑ Sandpits & Aggregates
- ☑ Transport

## ALWAYS YOUR SOLUTION

OUR VALUES: RESPECT, RIGOUR, AUTONOMY, CREATIVITY, DEVOTION



# COMMITMENT

# HEALTH & SAFETY

PERFORMING TO THE BEST OF OUR ABILITIES AND MANAGING RISK GO HAND IN HAND.

EMPLOYEE INVOLVEMENT | WORK SITE ANALYSIS | HAZARD PREVENTION | TRAINING



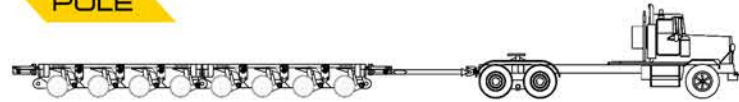
At Bellemare, we prepare each and every project with the utmost attention to detail to ensure that we accomplish the work in the safest manner possible. Our goal is to make sure that, at the end of the day, everyone returns home safely.

# EXPERTISE

# HEAVY TRANSPORT

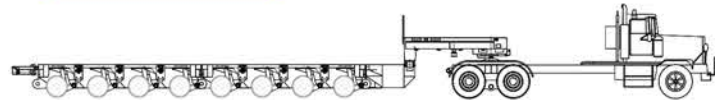
WITH 100+ AXLE LINES OF GOLDHOFER HYDRAULIC TRAILERS, EACH HAVING A 45-TON CAPACITY, BELLEMARE CAN TRANSPORT COMPONENTS WEIGHING OVER 5,000 TONS (11,000,000 LB).

## POLE



- ☑ Made for the long haul
- ☑ Length and width adjusted to the piece and the route
- ☑ Level platform guaranteeing stability of cargo

## GOOSENECK

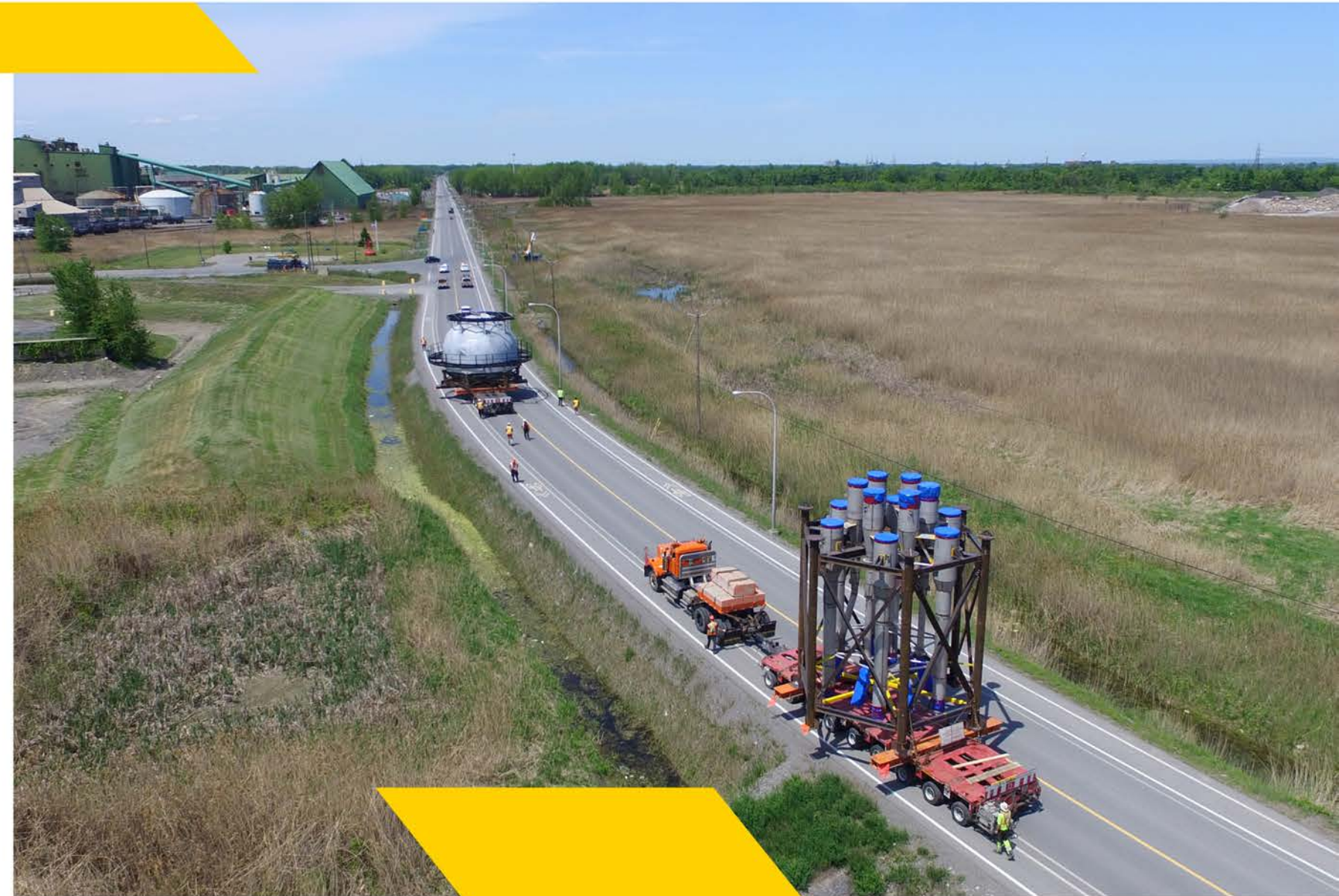


- ☑ Lower overall gross weight
- ☑ Better adapted to avoid costly structural analysis
- ☑ All other benefits are the same as the pole

## SELF-PROPELLED (SPMT)



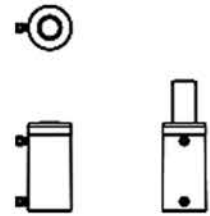
- ☑ Shortest configuration possible
- ☑ Each axle can rotate freely allowing the trailer to get into very tight areas
- ☑ Safer because operators can control trailer from a distance
- ☑ Can be connected electronically with other trailers



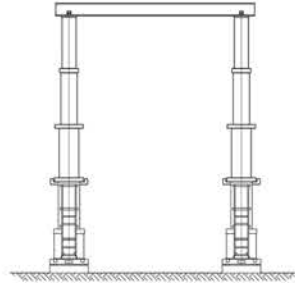
BELLEMARE'S HEAVY LIFT AND SLIDING SYSTEMS ARE SAFE, COST EFFECTIVE AND SPACE EFFICIENT SOLUTIONS WHEN:

- ☑ The piece is inside or hard to reach
- ☑ The piece requires a critical lift with multiple cranes
- ☑ Space is limited on the site

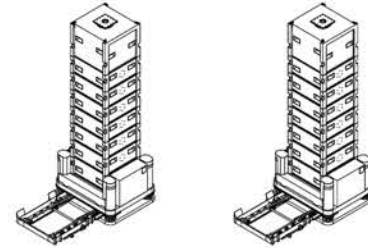
### HYDRAULIC JACKS



### GANTRY SYSTEMS



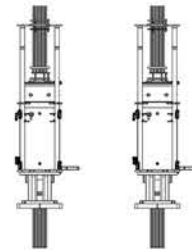
### JACK UP TOWERS



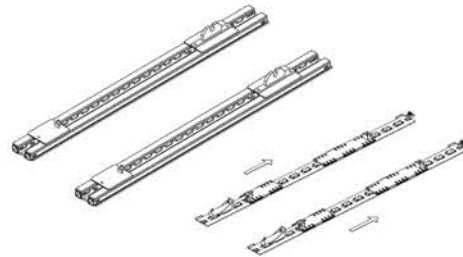
### CLIMBING JACKS



### STRAND JACKS



### SKIDDING SYSTEMS



# EXPERTISE

# ENGINEERING

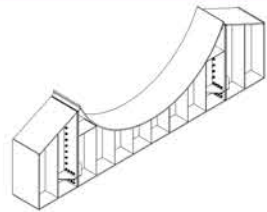
WITH BELLEMARE'S EXPERIENCED ENGINEERING TEAM, SAFE, COST EFFECTIVE AND INNOVATIVE SOLUTIONS ARE GUARANTEED.

## LASHING AND TIE DOWN



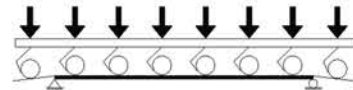
- ✓ Securement for all modes of transportation
- ✓ Design, fabrication and installation done in-house

## DESIGN AND FABRICATION



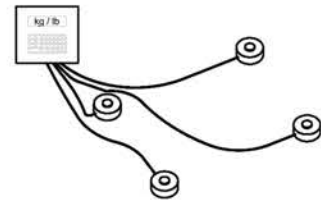
- ✓ Design based on customer needs
- ✓ Engineering fabrication drawings
- ✓ Internal fabrication and installation where needed

## STRUCTURAL ANALYSIS



- ✓ Analysis of structures (bridges, culverts, ...) on transportation route
- ✓ Mitigation and engineering solutions if structure lacks capacity

## WEIGHING SYSTEM



- ✓ Capacity of up to 1,000 tons (2,200,000 lb)
- ✓ Location of the centre of gravity
- ✓ Mobile and quick installation



TEAMWORK



CREATIVE THINKING



ATTENTION TO DETAIL



COMMITMENT TO SAFETY

# EXPERTISE

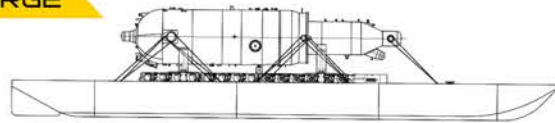
# LOGISTICS

WE CAN PLAN TRANSPORTATION OF YOUR CARGO ANYWHERE IN THE WORLD BY:

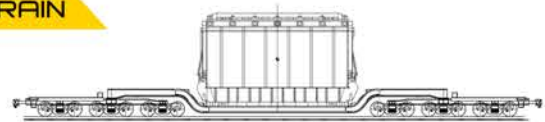
## ROAD



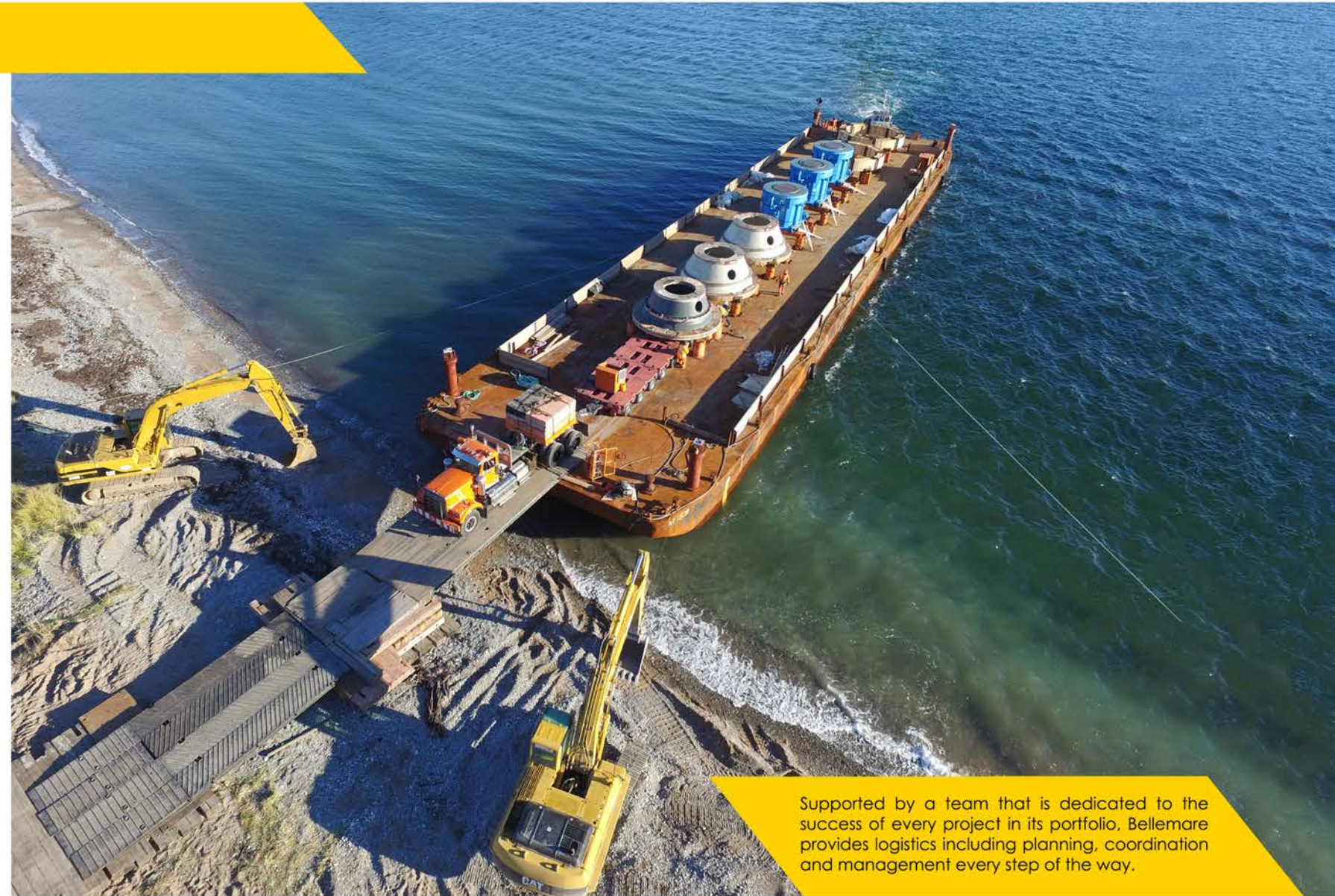
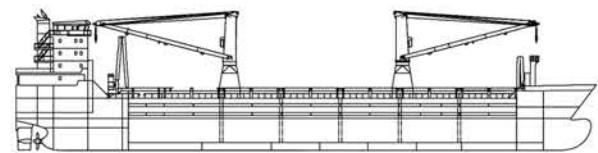
## BARGE



## TRAIN



## SHIP



Supported by a team that is dedicated to the success of every project in its portfolio, Bellemare provides logistics including planning, coordination and management every step of the way.



Eastern Canada amounts for nearly 80% of Canada's wind power production. That combined with the fact that many of the major components are sourced from overseas and others fabricated locally, this creates a very challenging logistics problem.

Bellemare has been the leader in wind energy transportation since it started in Canada and as a result has fine tuned all operations in order to save time at docks, during transportation by road and shunting pieces in marshalling yards.



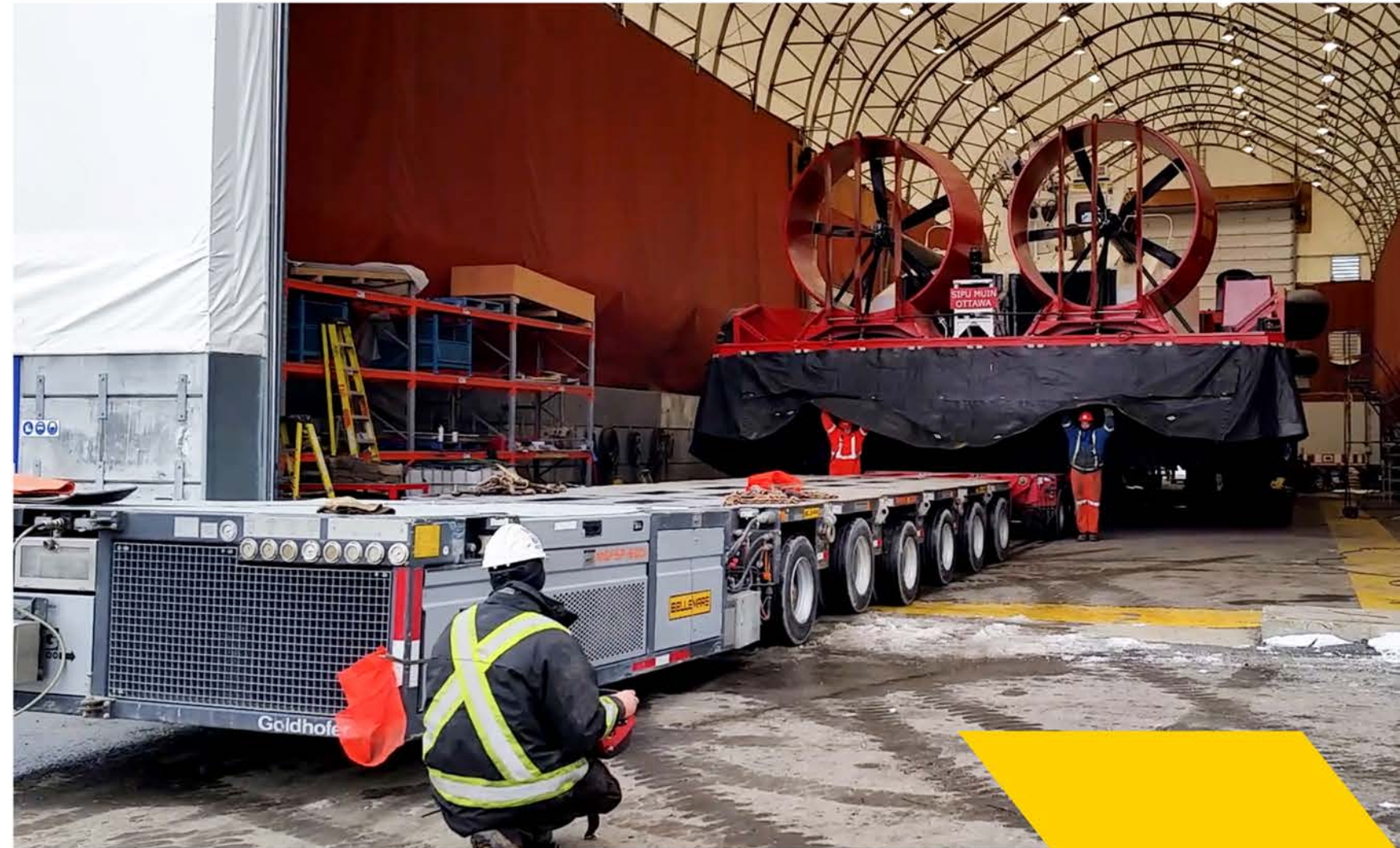


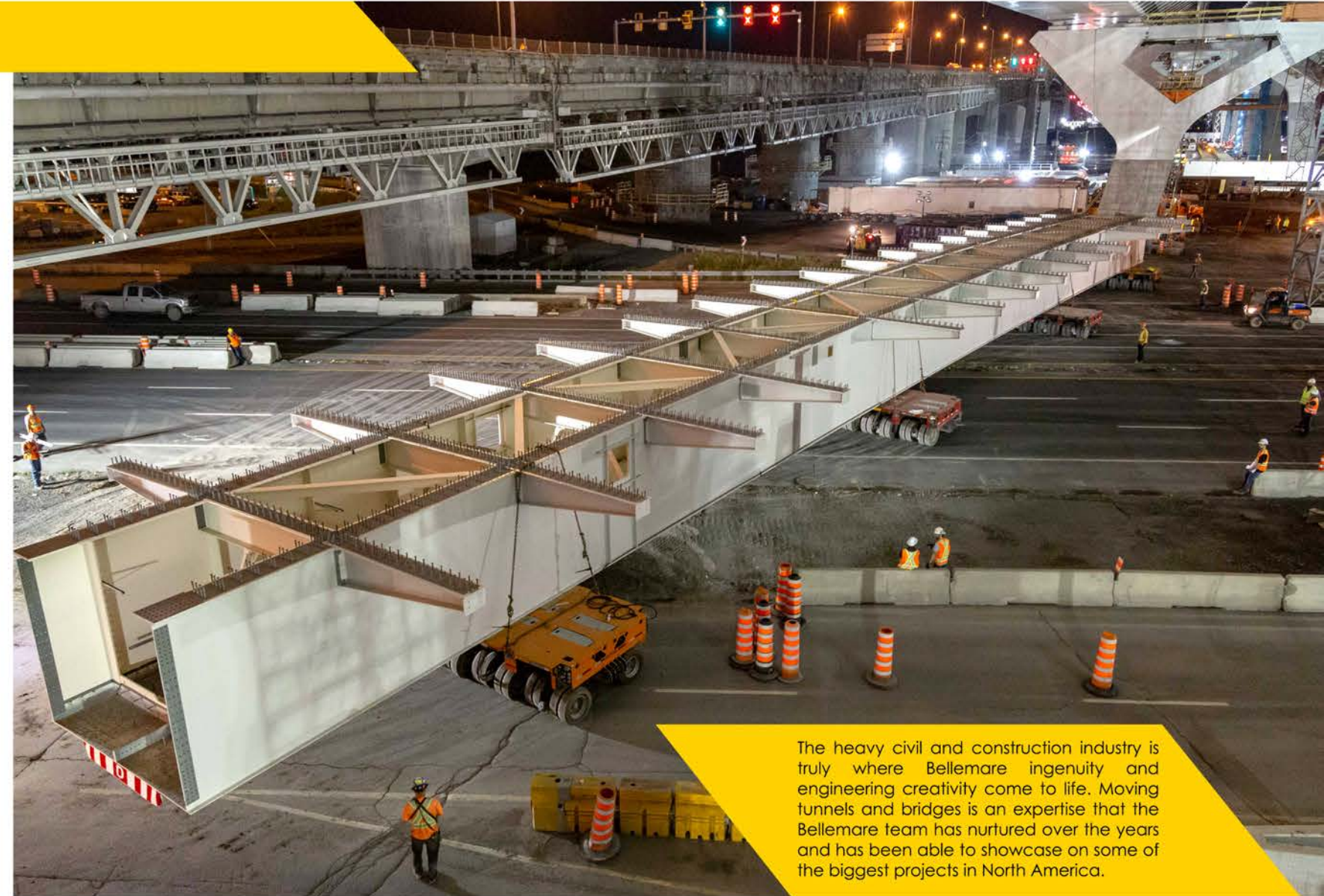
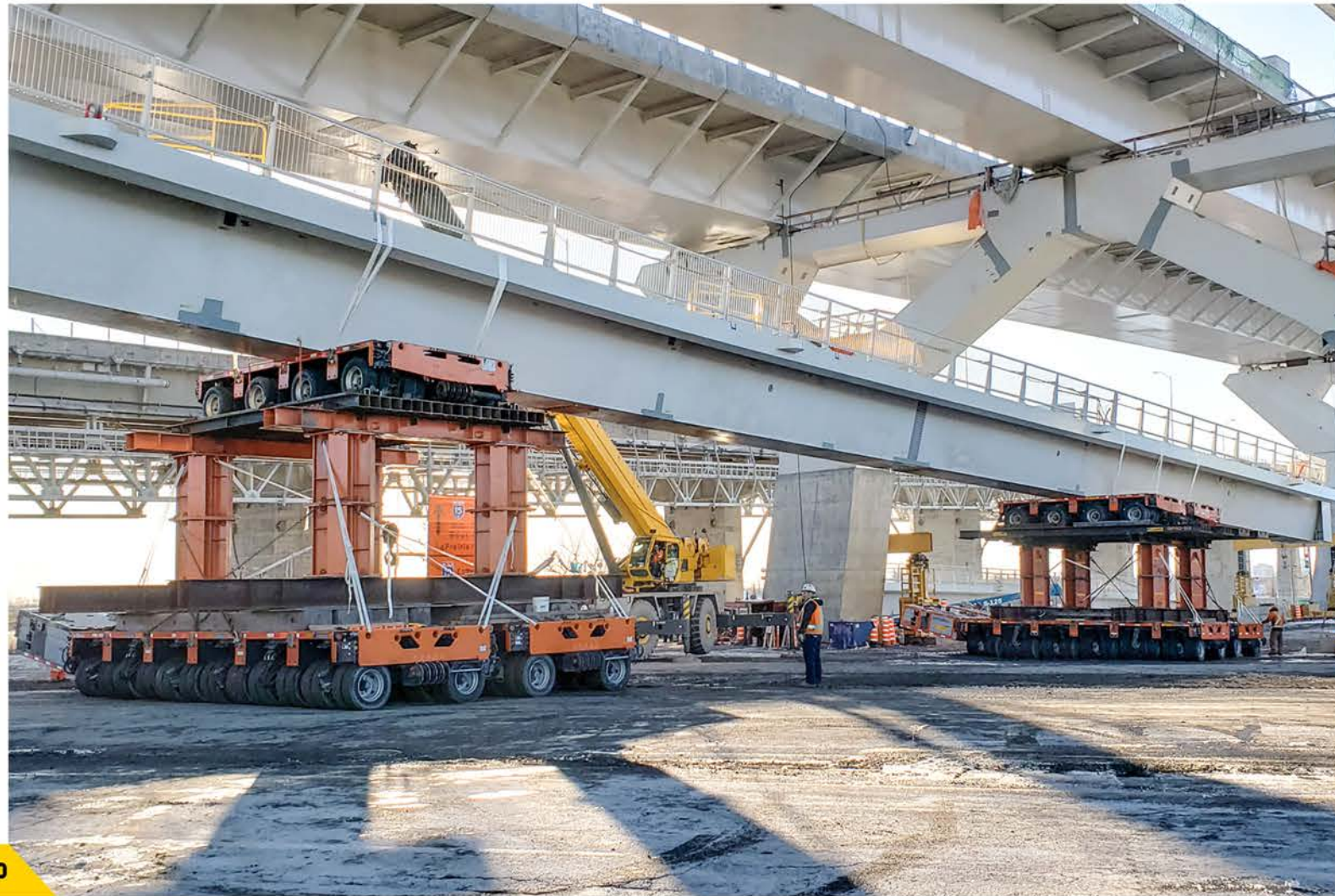


Bellemare's skill in moving the biggest and heaviest pieces across Eastern Canada is continuously challenged by components that are not the heaviest but are extremely difficult to move, remove or replace. In the automotive, medical and primary metal manufacturing industries Bellemare plays a vital role in ensuring downtime is reduced and that operations are done in a precise and safe manner.

With 100+ lines of Goldhofer hydraulic platform trailers, Bellemare presently has a capacity of over 5,000 tons (11,000,000 lb). Such that our equipment and staff have played a major role in building barges and ships across Canada.

Our equipment is also used in ports to move and store small components as well as bigger ones, such as fully assembled container cranes.





The heavy civil and construction industry is truly where Bellemare ingenuity and engineering creativity come to life. Moving tunnels and bridges is an expertise that the Bellemare team has nurtured over the years and has been able to showcase on some of the biggest projects in North America.



Traditionally, Eastern Canada has been the hub for refineries converting crude oil from overseas into its many useful by products. Bellemare, with its strong presence locally, works closely with the major oil contractors and EPC companies to provide engineering, heavy haul and rigging services during minor and major operations such as expansions, shutdowns and relocations.

With Bellemare's local presence, experienced engineering and operations team we are well positioned to provide tailor made solutions for transport, removal, installation, project management and project logistics.

# INDUSTRY

# HYDROELECTRIC

Hydroelectric power is the staple of the Quebec economy. With Bellemare's head office found in this province, hydroelectric components were the basis for it's creation and has been one of its leading sectors ever since.

Bellemare services the major electricity providers in Ontario, Quebec and the Maritimes by transporting and installing heavy components such as rotors, stators, transformers and turbines.



North America is known for its abundance in natural resources such as iron, gold, silver, copper and nickel, which are mined and sent abroad into the world market. These mining sites are usually remote, hence the challenge of moving such large and important cargo. With Bellemare's strategic and creative planning, our customers are able to ship components in their largest most complete form, avoiding costly operations on site as well as downtime.

In order to do so, Bellemare uses every transportation mode it has available such as road, rail, water and occasionally air.





**#TEAMBELLEMARE**

**CANADA | UNITED STATES**

**T : 450 638-5566**

**TF : 1 800 882-3101**

**projects@groupebellemare.com**

